

ArrowAction™ Series Rinsers

Air Rinsers

- Rugged stainless steel construction
- Integrated infeed conveyor drive with air bladder product stop
- Integrated discharge conveyor idle with jam detection spill table
- Compact design
- Available in a variety of configurations
- Effectively at production-rate speeds
- DC ionized air option
- Easily adjustable to fit various product sizes
- Dual motors and reducers with variable frequency drives

Water Rinsers

- Rugged stainless steel construction
- Integrated infeed conveyor drive with air bladder product stop
- Integrated discharge conveyor idle with jam detection spill table
- Dual motors and reducers with variable frequency drives
- Rinses effectively at production-rate speeds
- Available in a variety of configurations
- Easily adjustable to fit various product sizes



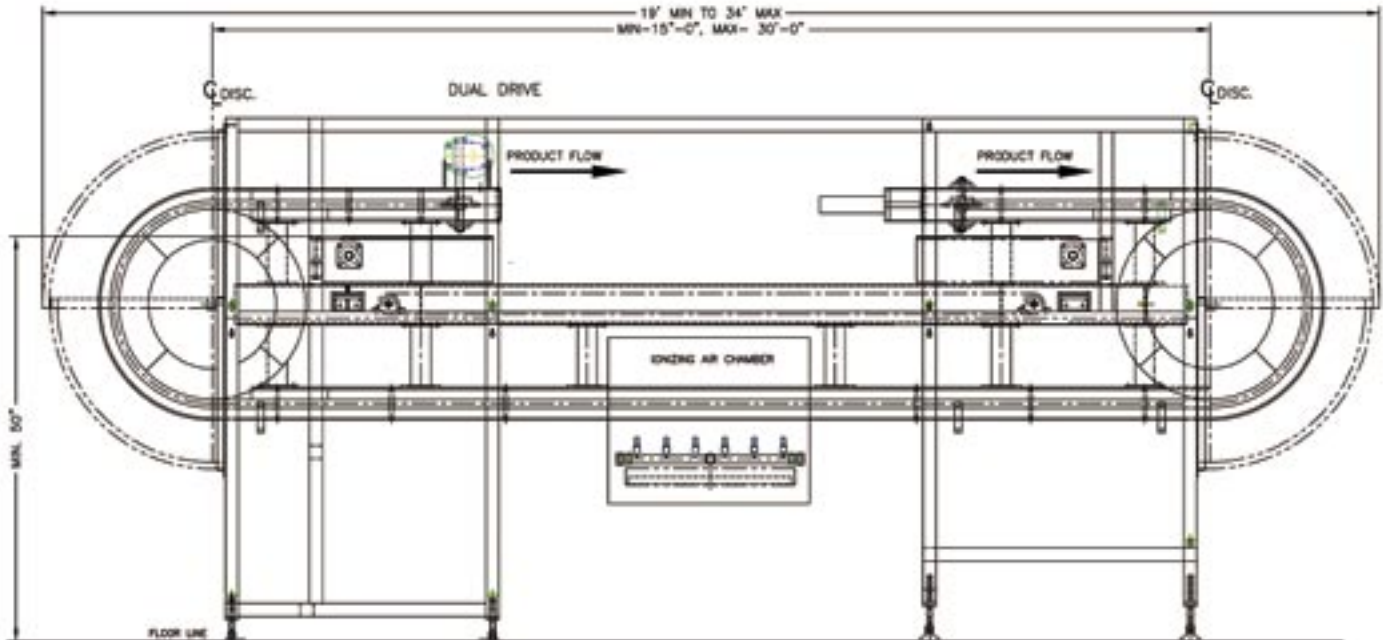
Features and Benefits

- The Arrowhead continuous motion gripper rinser gently grips and inverts for either water rinsing, ionized air rinsing, or combination air/water rinsing.
- The air cleaner provides static control with ionized air for one of the most effective means of eliminating static on composite, plastics and other containers where friction and control separation cause static charges to build up.
- The air cleaner also offers the same high speed and high quality control as the water rinser.
- The GR-100 through GR-500 series rinsers offer system layout flexibility.
- Water and/or air jet cleaning.
- Air cylinder controlled gripper chain take-ups offer reliable chain tensioning.
- Can be shipped complete without reassembly.
- Custom built for every application.

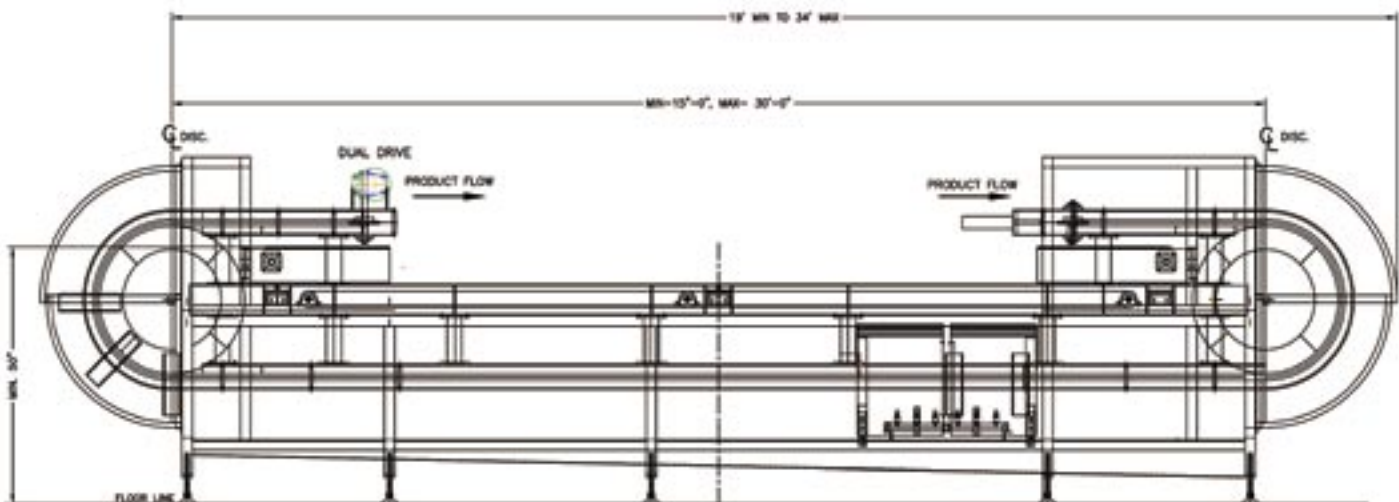


ArrowAction™ Series Rinsers

Typical Conveyor Layout Interface Dimensions for Rinsers

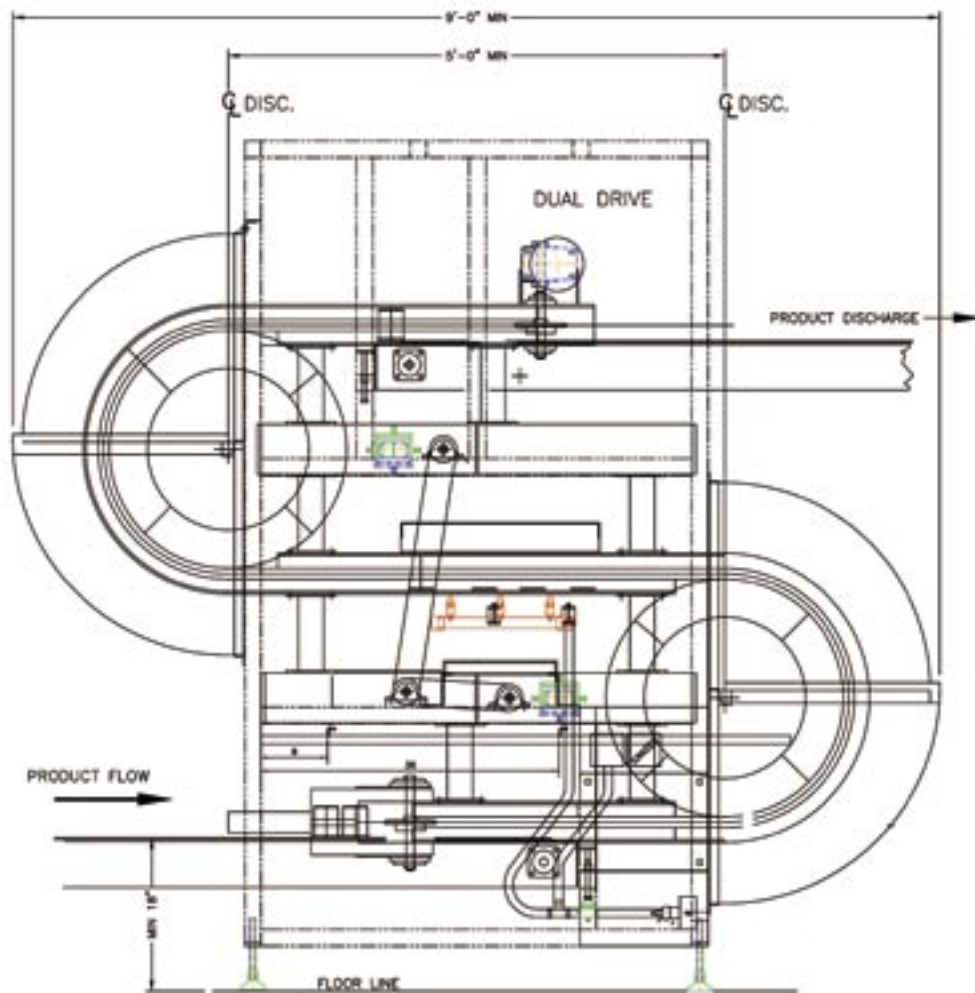


GR-100 SERIES AIR RINSER

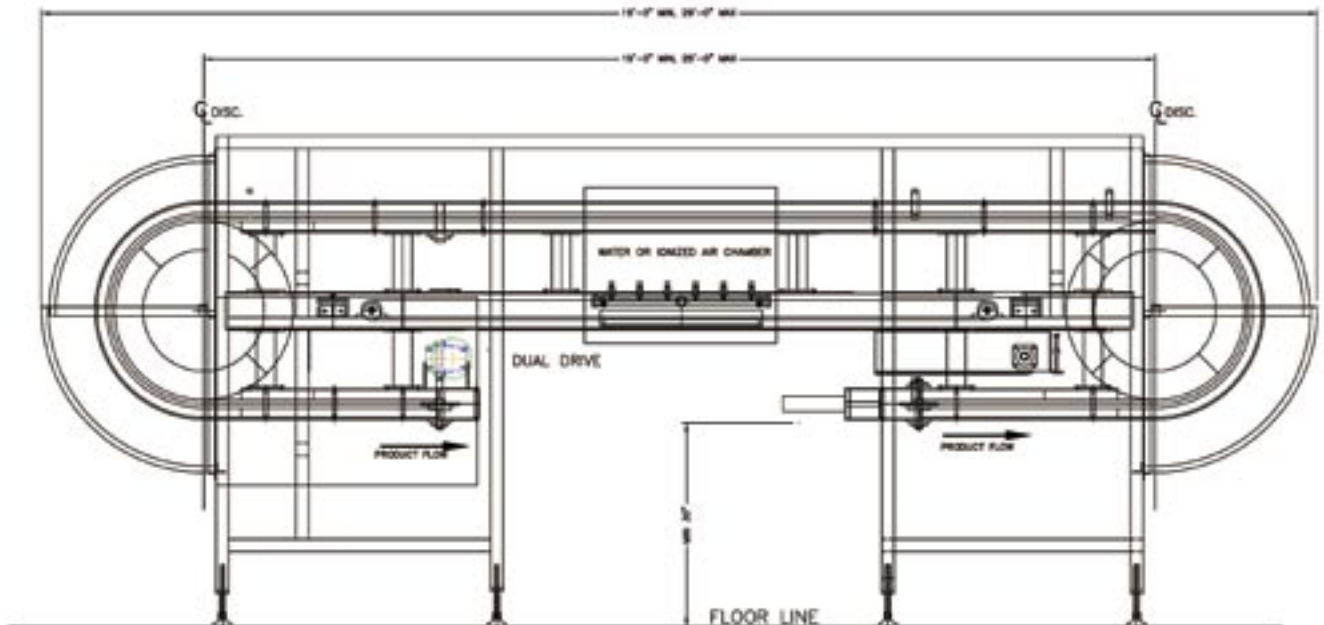


GR-100 SERIES WATER RINSER

ArrowAction™ Series Rinsers

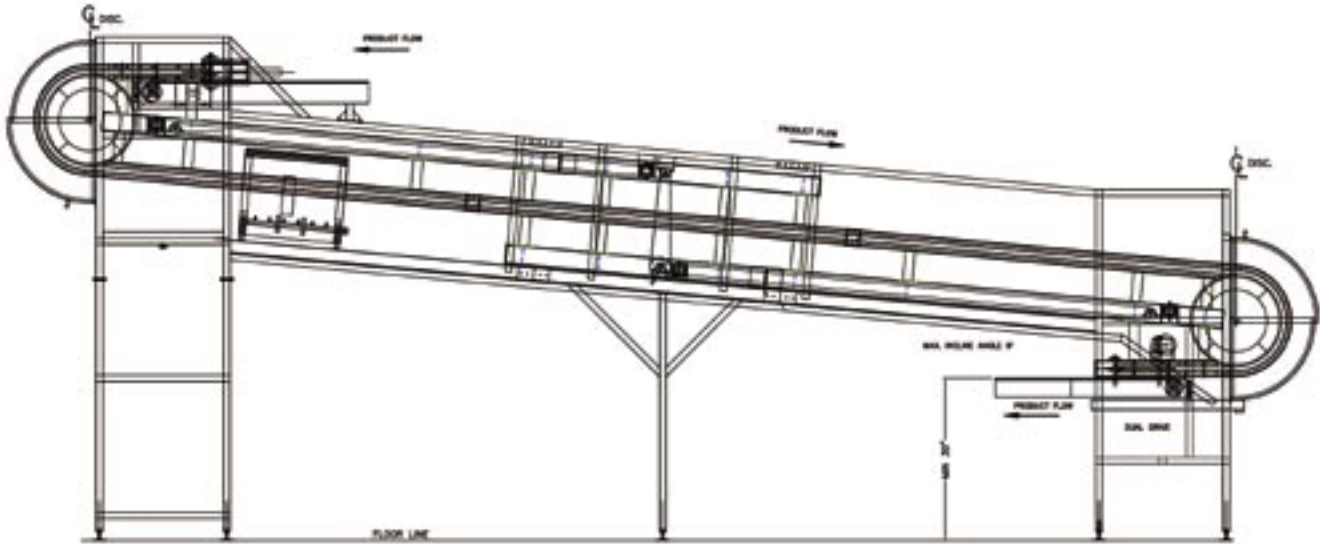


GR-200 SERIES AIR CLEANER

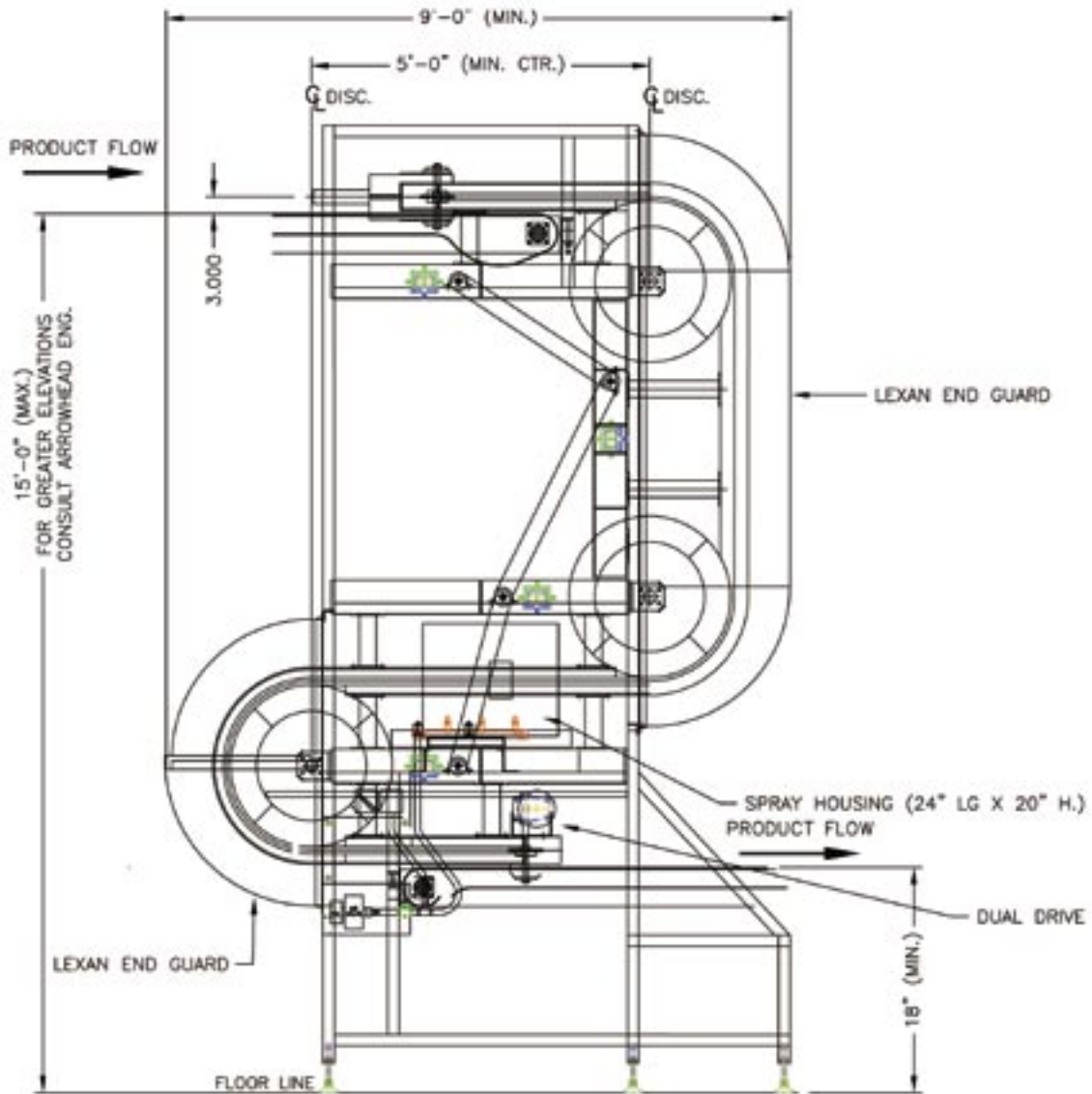


GR-300 SERIES (WATER OR AIR) RINSERS

ArrowAction™ Series Rinsers



GR-400 SERIES (WATER OR AIR) RINSERS



GR-500 SERIES (WATER AND/OR AIR) RINSER