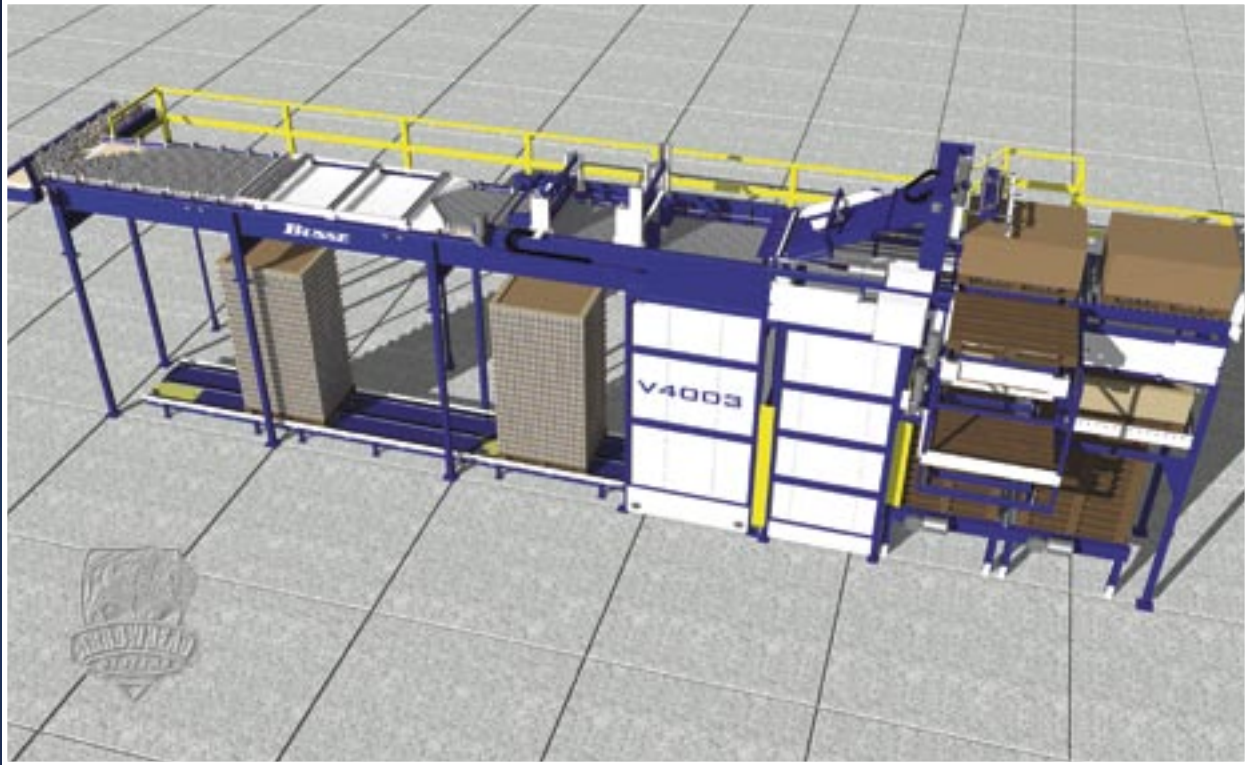


VIPER SERIES™

Bulk Palletizer



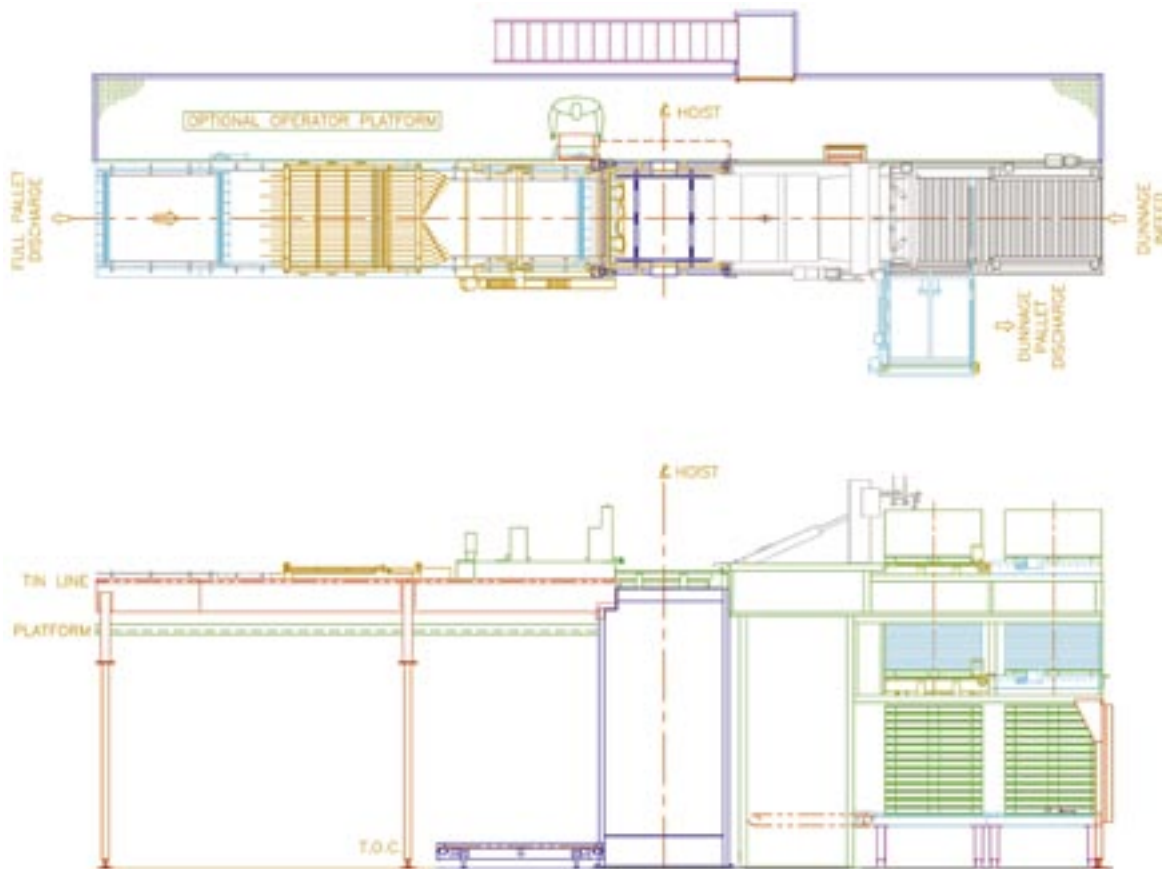
FEATURES	MODELS					
	V3003	V3004	V4003	V4004	V5003	V5004
Semi-Automatic Sweep Functions	•	•	•	•	•	•
Automatic Sweep Function	S	S	S	S	S	S
Manual Sheet Placement	•	•	•	•	•	•
Automatic Single-Stage Sheet Placement	S	•	•	•	S	•
Automatic Dual-Stage Sheet Placement	•	S	S	S	•	S
Manual Top Frame Placement	•	•	•	•	•	•
Automatic Single-Stage Top Frame Placement	S	•	•	•	S	•
Automatic Dual-Stage Top Frame Placement	•	S	S	S	•	S
Self Patterning	•	•	•	•	•	•
Automatic Void-Free Patterning	S	S	S	S	S	S
Semi-Automatic Pallet Change Cycle	•	•	•	•	•	•
Automatic Pallet Change Cycle	S	S	S	S	S	S
Bottom Pallet Injection	•	•	•	•	•	•
Bottom Pallet Injection – High Speed	S	S	•	•	S	S
Top Pallet Injection	•	•	S	S	•	•
Touch Screen Monochrome Operator Interface	S	S	S	S	S	S
Touch Screen Color Operator Interface	O	O	O	O	O	O
Additional Dunnage Capacity	•	O	O	O	•	O
Pallet Conveying	O	O	O	O	O	O
Container Conveying	O	O	O	O	O	O

CONTAINERS	MODELS					
	V3003	V3004	V4003	V4004	V5003	V5004
Glass Round	S	S	•	•	•	•
Glass Non-Round	O	O	•	•	•	•
Metal Round	•	•	S	S	•	•
Metal Non-Round	•	•	O	O	•	•
Plastic Round	•	•	•	•	S	S
Plastic Non-Round	•	•	•	•	O	O
Composite Round	•	•	•	•	S	S
Composite Non-Round	•	•	•	•	O	O

S = Standard

O = Optional

• = Not Available/Applicable



STANDARD PARAMETERS	VIPER SERIES
Machine Speed, Sweeps/Minute	Up to 10
Maximum Load Height, Inches (mm)	110 (2790)
Maximum Load Weight, Pounds (Kg)	Up to 4000 (1810)
Standard Pallet Size, Inches (mm)	44 x 56 (1120 x 1420)
OPTIONAL - Pallet Width Range, Inches (mm)	40-50 (1000-1143)
OPTIONAL - Pallet Length Range, Inches (mm)	48-56 (1220-1420)
Standard TOC, Inches (mm)	13 (330)
Minimum Pallet Conveyor TOC, Inches (mm)	13 (330)
Standard Tin Line (TL), Inches (mm)	165 (4190)
Minimum Tin Line (TL), Inches (mm)	156 (3860)
Electrical Power	460V/3 phase/60 Hz
Control Voltage	24 VDC
Compressed Air Volume, CFM (Liters/min)	15 (7)
Compressed Air Pressure, PSI (KPa)	80 (550)
Compressed Air Inlet	3/4" NPT